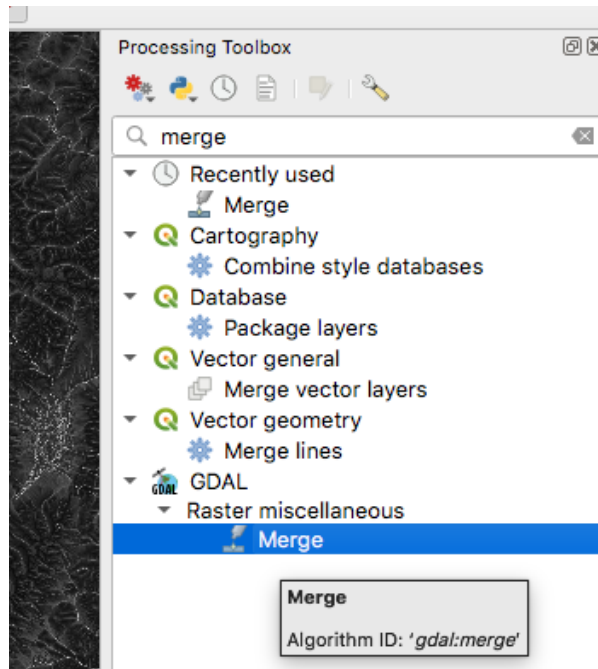
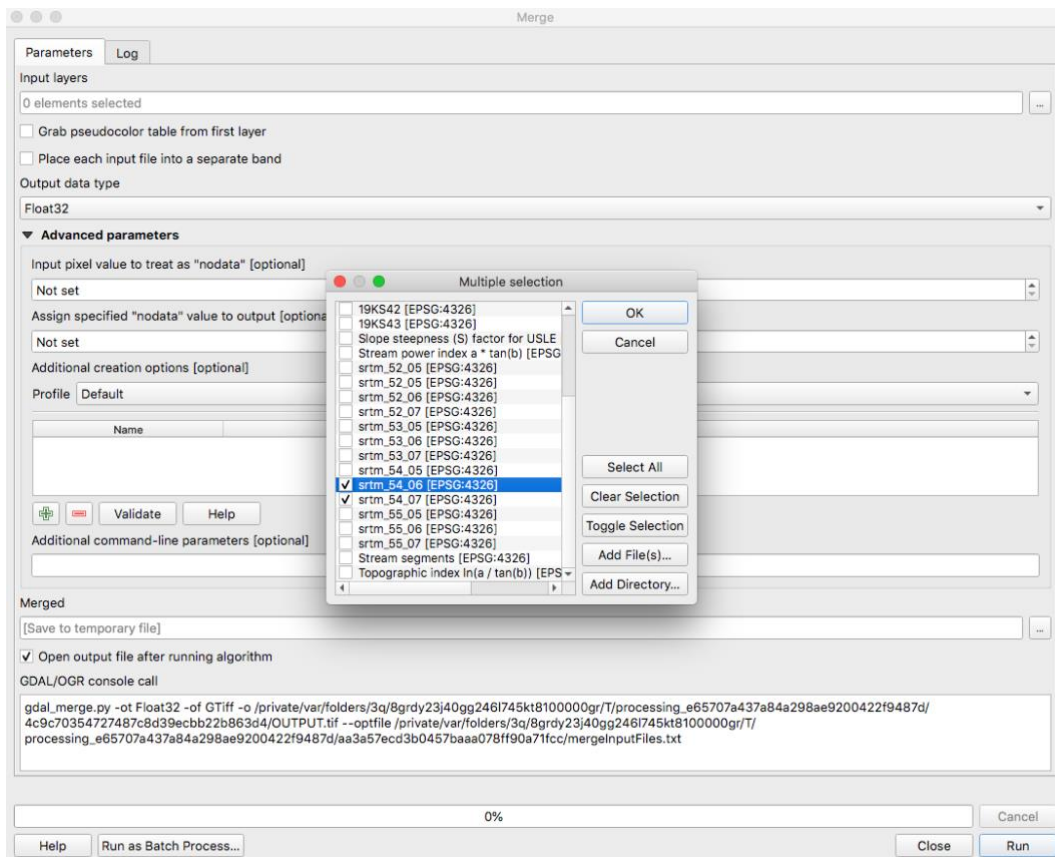


Creating watershed maps in QGIS 3.10

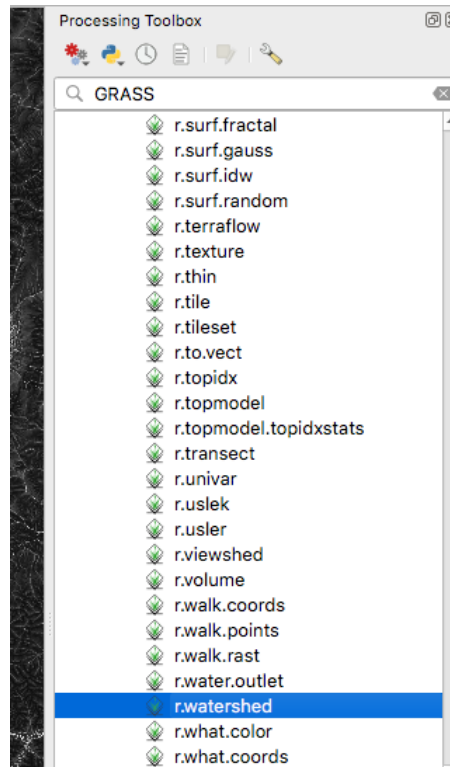
Merge your DEM layers using the merge tool



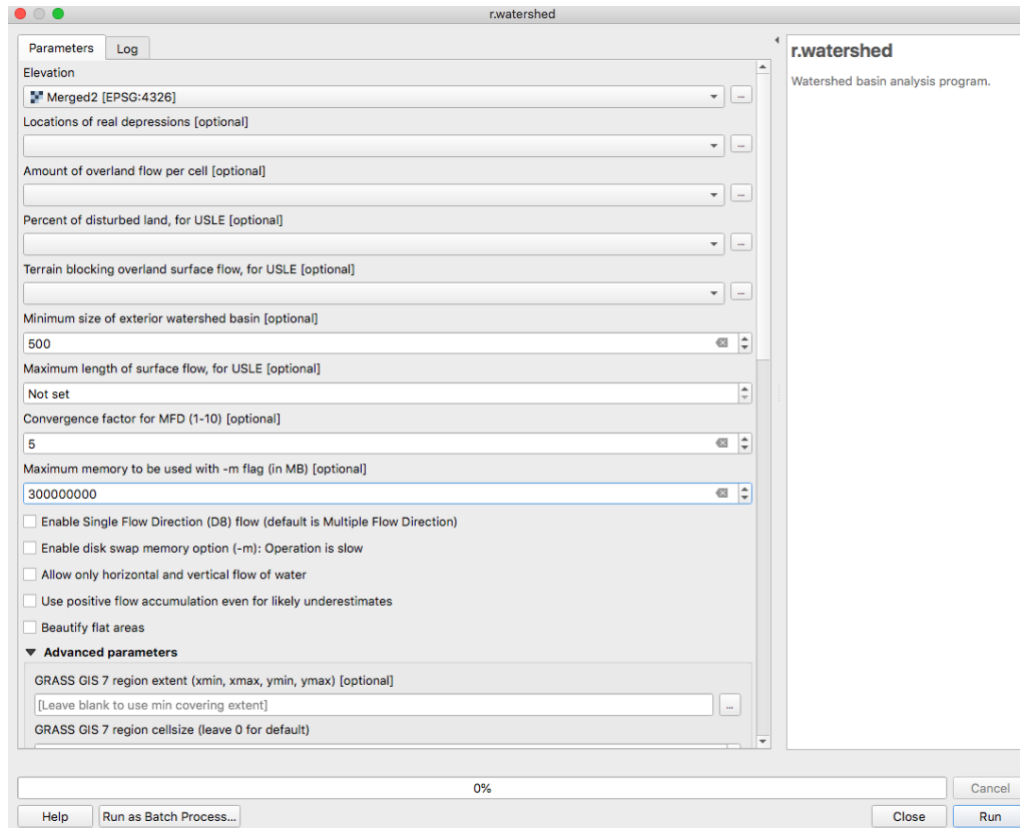
Use all default settings and select the DEMs you want



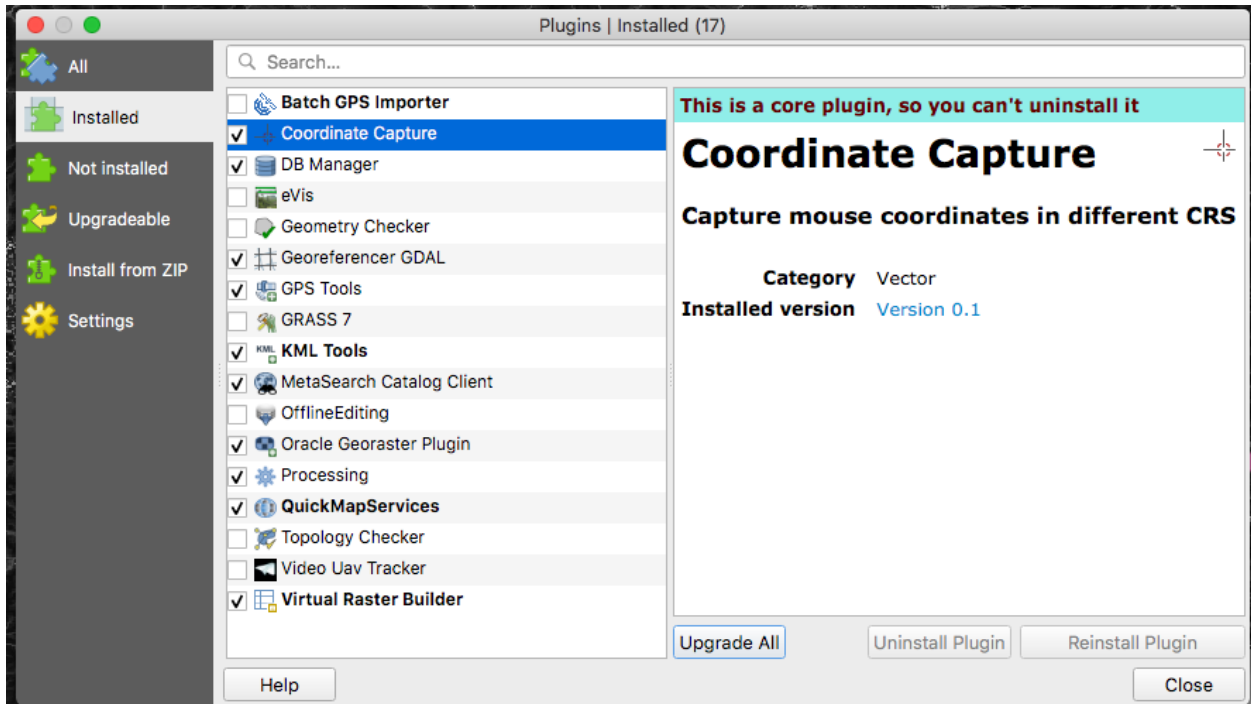
Search for GRASS tool in the processing toolbox



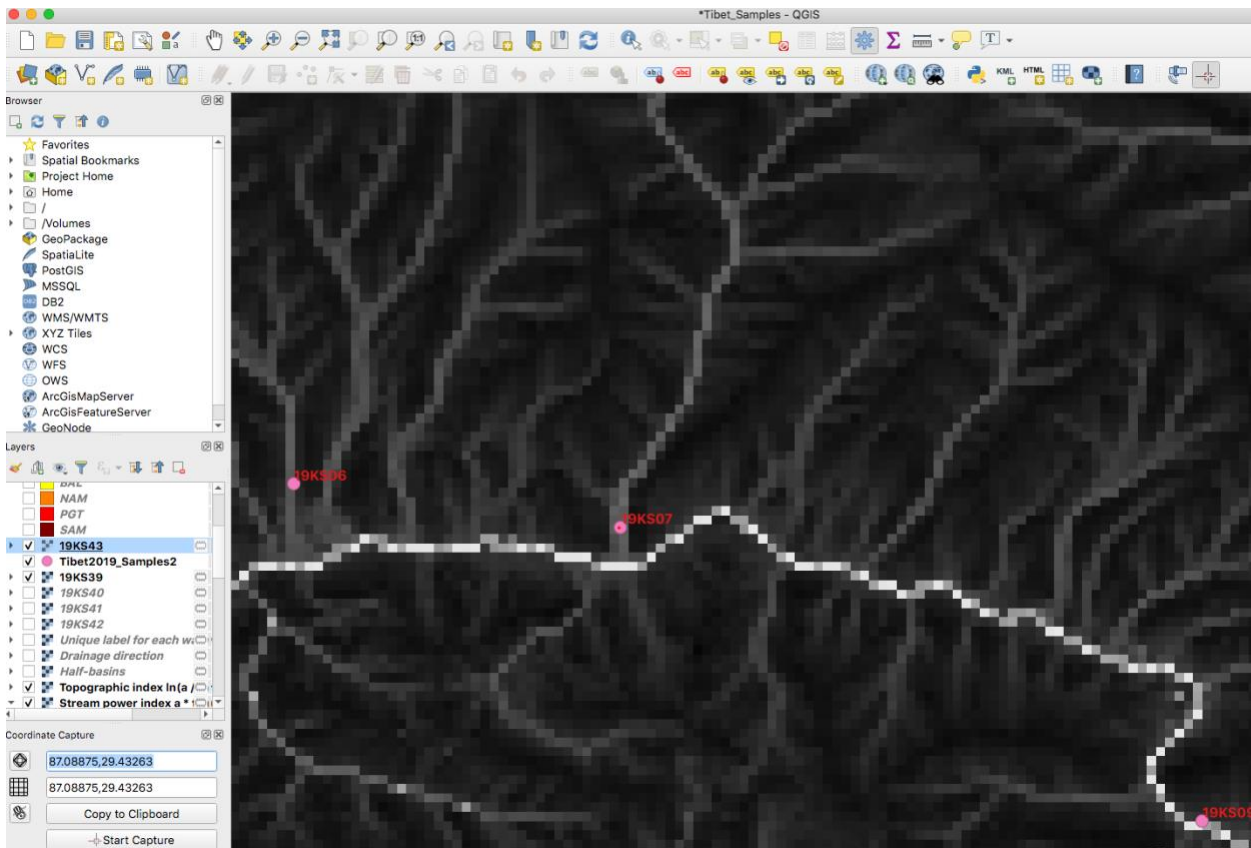
Select your merged DEM, set the minimum size of exterior watershed to 500, set memory usage to something big



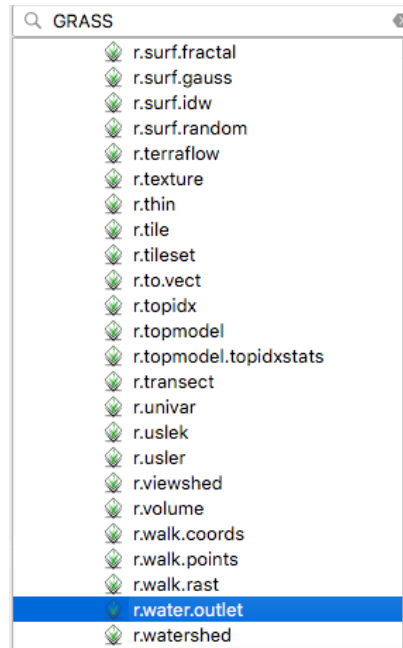
Add the coordinate capture plugin



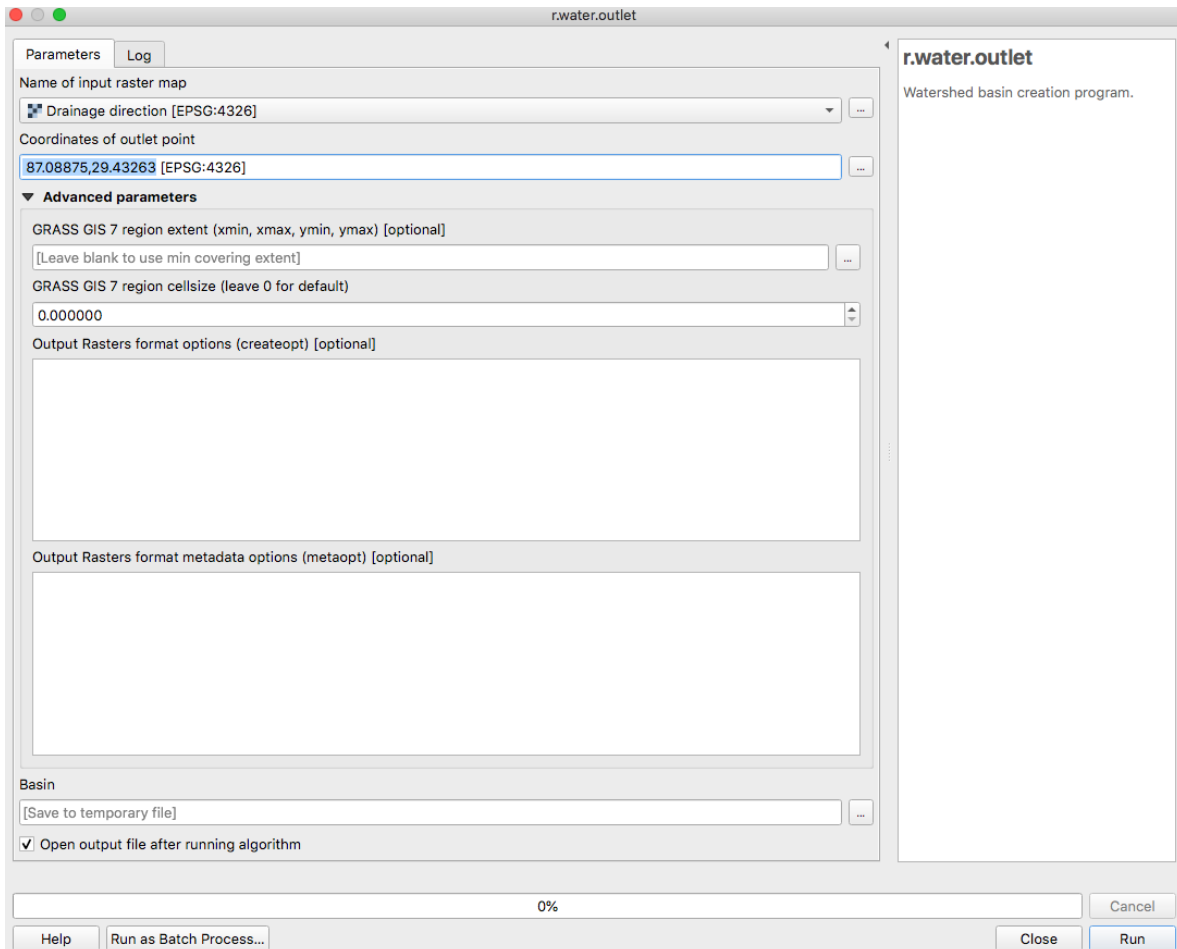
Click on coordinate capture and copy the coordinates



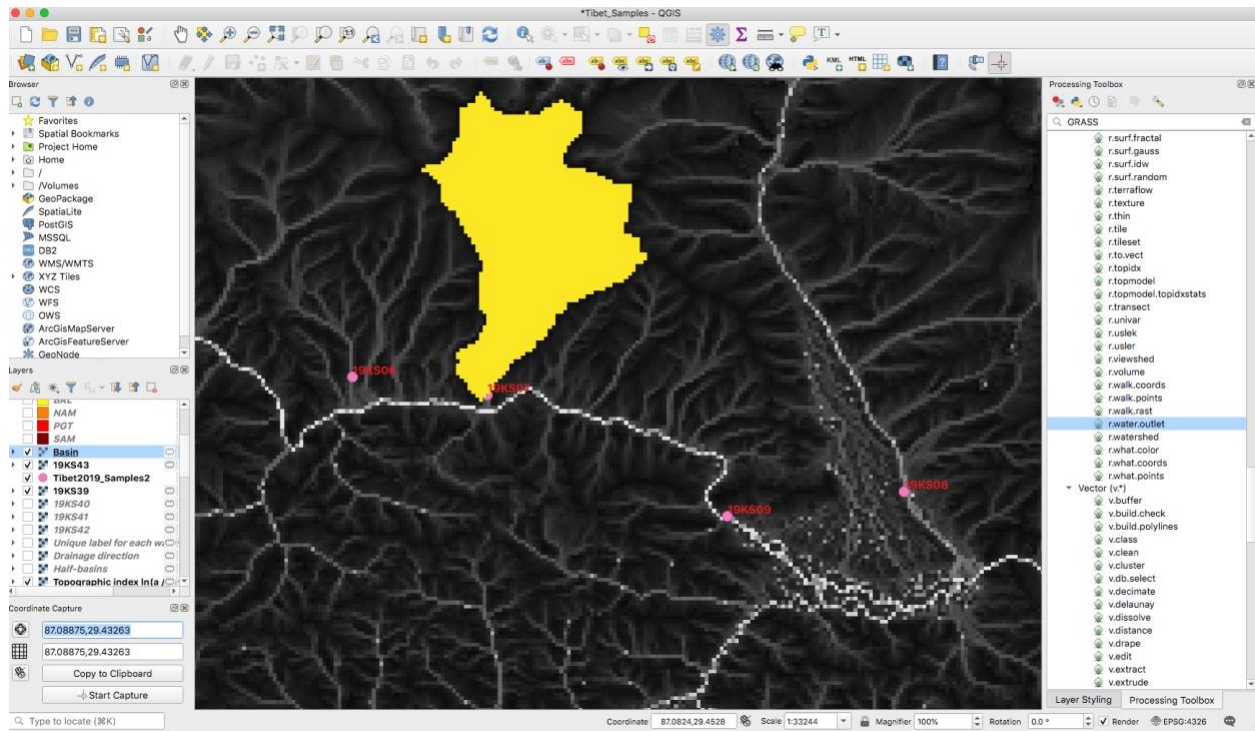
Select the watershed outlet tool



Select drainage direction layer, Paste coordinates



Boom, watershed.



Kurt Sundell

February 9, 2021